

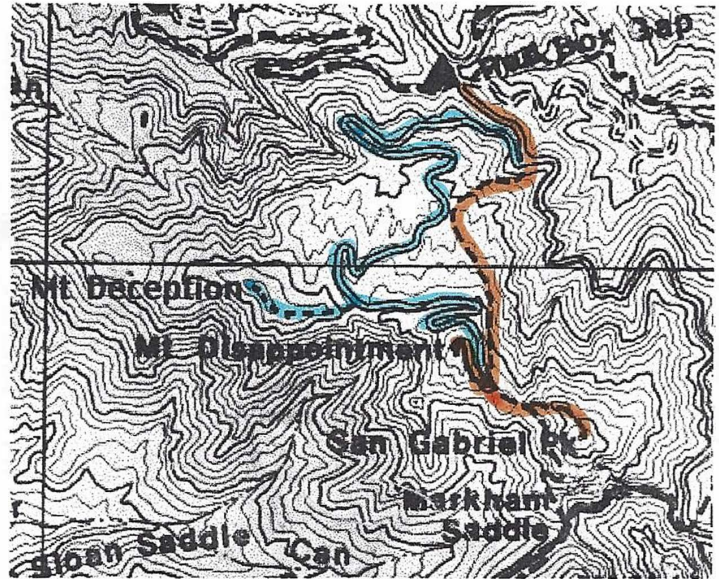
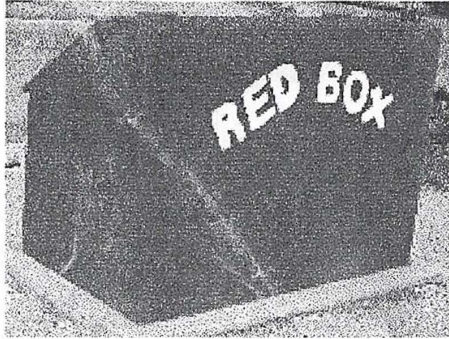
# Red Box Three Peak OTP Hike

## August 18, 1999, 9:30 AM

Ron Forbess' Hike

### Trailhead Directions

Meet at Red Box Station at mileage paddle 38.38 on the Angeles Crest Highway (about 14 miles from I-210 at the Mt. Wilson road turn off). Be sure to be there in plenty of time for our usual 9:30 departure. Note that the restrooms are not working, however, there are several portables.



### Summary

This total hike distance is 7.5 miles with 2080 feet elevation gain. We will have an opportunity to hike and climb to the top of three peaks on this outing. Two of these we have done before, San Gabriel peak and Mount Disappointment. The third one is Mount Deception, which will be a new challenge. As the government surveyors did in 1875, we will reach Mount Disappointment first. The summit is cluttered with electronic installations and empty buildings dating from the 1950's when an Army Nike missile station was located there. At this point some of the group will probably eat lunch and head back down for refreshments. But the remaining hardy souls will climb the west ridge of San Gabriel Peak to the summit where we will get an unmatched 360-degree panorama over the wrinkled San Gabriel Mountains while we eat lunch. Mount Deception is north and west of the other peaks and is reached from a steep trail taking off from the paved Mount Disappointment fire road. From the summit we will have a great view of Bear Canyon.

### The Hike

After walking up the Mount Wilson Road from Red Box about .4 mile, we take the San Gabriel Peak Trail (built by the JPL Hiking Club in 1988) to short cut 1.4 miles to the upper end of the Mount Disappointment fire road and then walk another half mile up to Mount Disappointment at 5960 feet elevation and about 1300 feet gain from Red Box. We then drop down to the saddle between San Gabriel Peak and Mount Disappointment and take the ridge trail 400 feet and .4 mile up to the peak at 6161 feet elevation. After scrambling down the trail to the saddle we will hike down the paved Mount Disappointment fire road, instead of taking the trail down. About one mile past the junction of the road to Mount Disappointment we reach a saddle at 5450 feet elevation. Here we start up a steep trail almost 400 feet and .35 mile to the summit of Mount Deception at 5796 feet elevation. It is all down hill from there as we first hike down the paved fire road, then the paved Mount Wilson road to Red Box.

